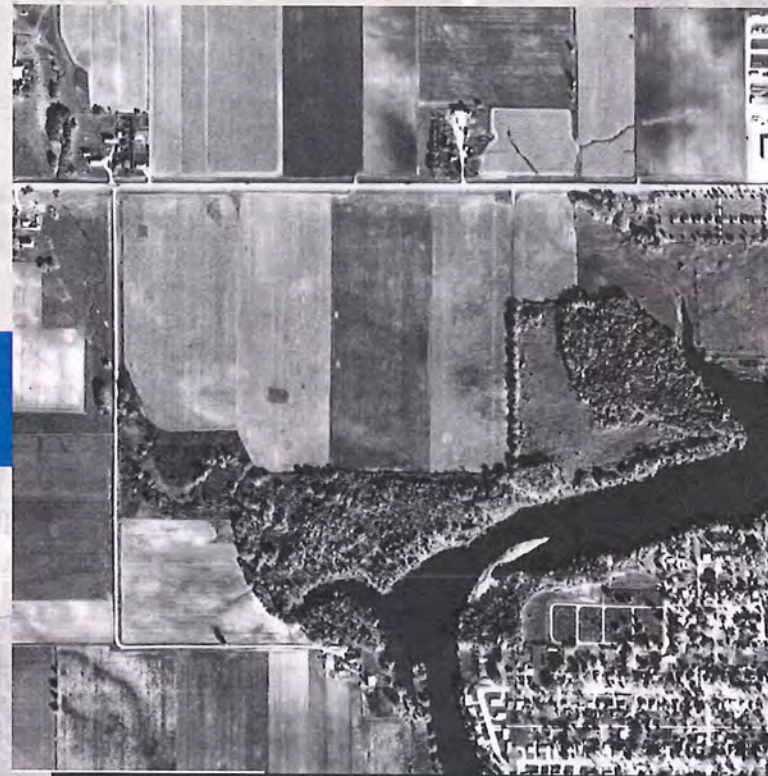


Bear Cave Park Master Plan



TABLE OF CONTENTS

- FIGURE 1** Aerial Map
- FIGURE 2** Historic Aerial Photos
- FIGURE 3** Existing Conditions Map
- FIGURE 4** Site Context Map
- FIGURE 5** Overall Master Plan
- FIGURE 6** Master Plan
- FIGURE 7** Band Shell
- FIGURE 8** Informational Signs
- FIGURE 9** Trail and Plants
- FIGURE 10** Crosswalk Information
- FIGURE 11** Implementation Strategies



Path: G:\12298\GIS\Maps\Stewartville\Maps\Stew-Fig 0 Cover.mxd



1937



1964



1982



1996



2005



2013

Path: G:\12298\GIS\Maps\Stewartville\Mapst\Stew-Fig 2 Historic PhotoA.mxd

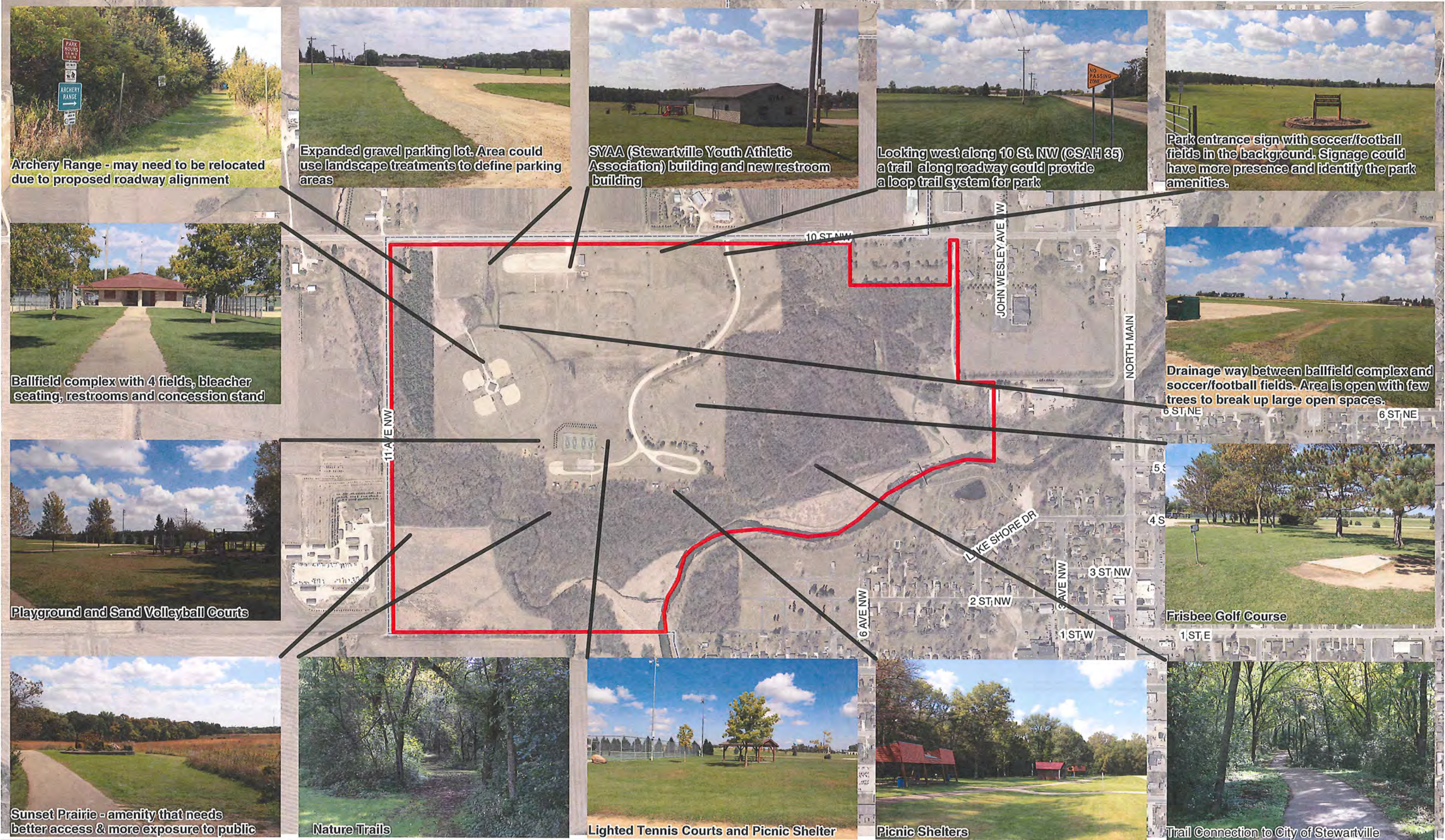


Building a Better World
for All of Us®

Project Number: 12298
Date: 10/28/2014
Map by: MWE
Checked by: AM

Bear Cave Park Master Plan
Stewartville MN

FIGURE 2
Historic Aerial Photos



Path: G:\12298\GIS\Mapa\Stewartville\Mapa\Stew-Fig 3 Ex. Conda.mxd



Project Number: 12298
 Date: 11/11/2014
 Map by: MWE
 Checked by: AM

Building a Better World
 for All of Us®

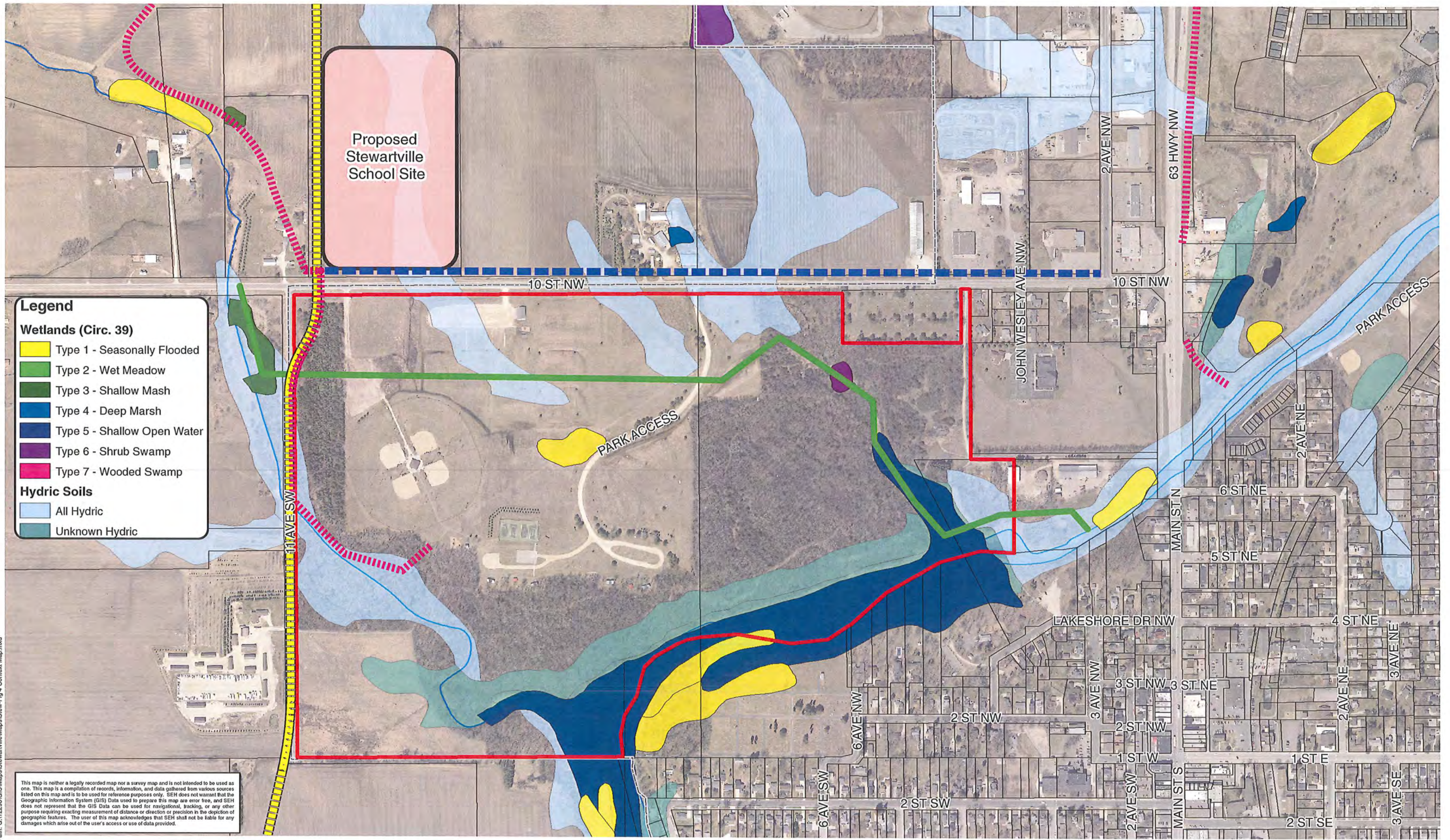


0 200 400 800
 Feet

Bear Cave Park Boundary
 City Limits

Bear Cave Park Master Plan
 Stewartville MN

FIGURE 3
 Existing Conditions Map



Path: G:\12298\GIS\Maps\Stewartville\Maps\Stew-Fig 4 Context Map.mxd

This map is neither a legally recorded map nor a survey map and is not intended to be used as one. This map is a compilation of records, information, and data gathered from various sources listed on this map and is to be used for reference purposes only. SEH does not warrant that the Geographic Information System (GIS) Data used to prepare this map are error free, and SEH does not represent that the GIS Data can be used for navigational, tracking, or any other purpose requiring exacting measurement of distance or direction or precision in the depiction of geographic features. The user of this map acknowledges that SEH shall not be liable for any damages which arise out of the user's access or use of data provided.



Building a Better World for All of Us®

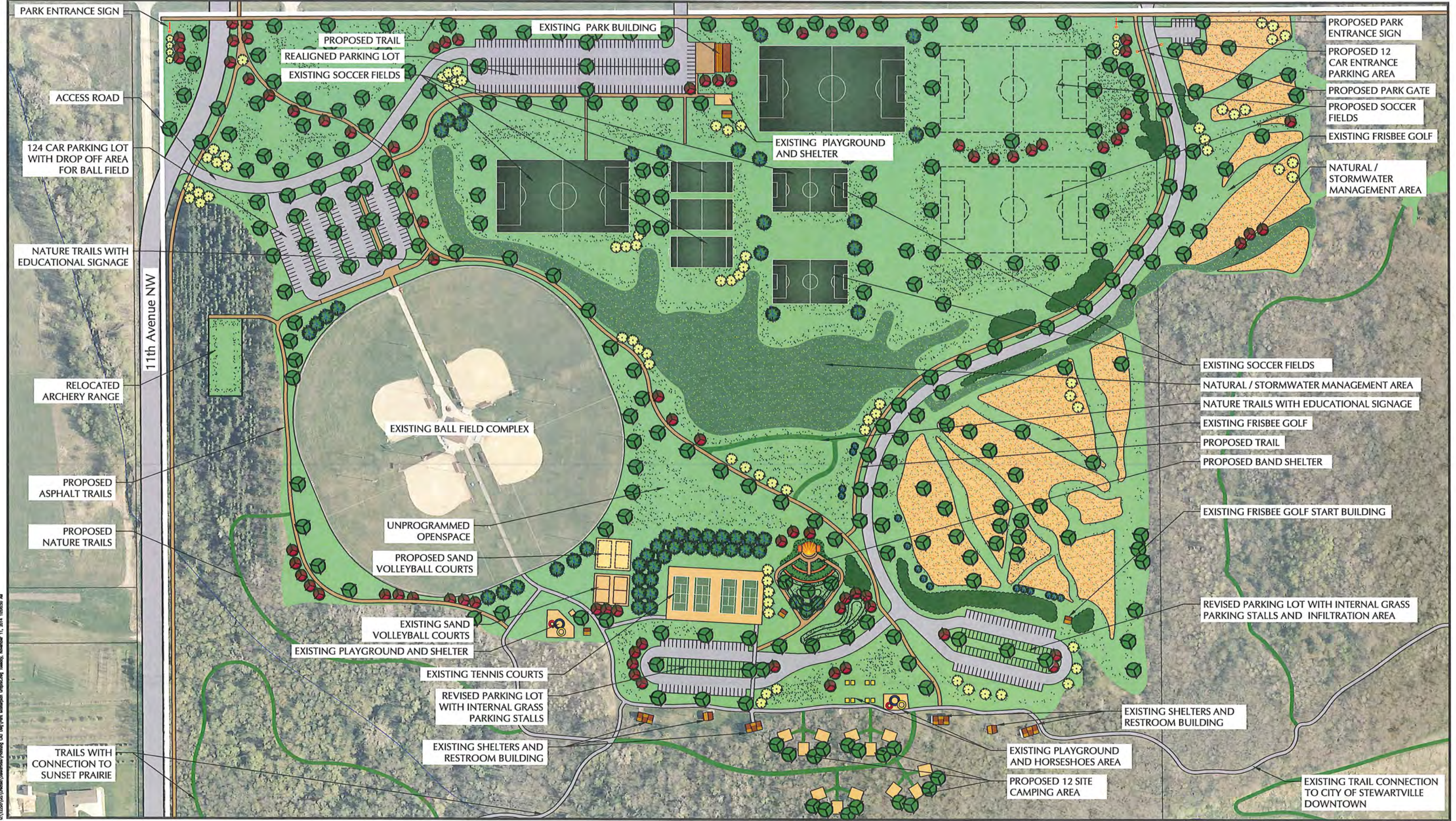
Project Number: 12298
 Date: 11/11/2014
 Map by: MWE
 Checked by: AM



- - - - Proposed Multi-Use Trail
- Proposed Sanitary Sewer Connection
- Proposed Water Main Connection
- - - - Proposed Roadway Connection
- Proposed Stewartville School
- Bear Cave Park Boundary
- City Limits
- Parcels 2014
- ~ Rivers
- ~ Streams

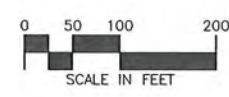
Bear Cave Park Master Plan
 Stewartville MN



FIGURE 4
 Site Context Map






© 12/20/13 GCS (North America) Planning GIS Dept. All rights reserved. Drawing Number: 11, 2014, 10/28/14 AM

SEH YAGGY
 Building a Better World for All of Us®
 PROJECT NUMBER : 12998
 DATE: October 28, 2014
 DRAWN BY: MWE
 CHECKED BY: AM

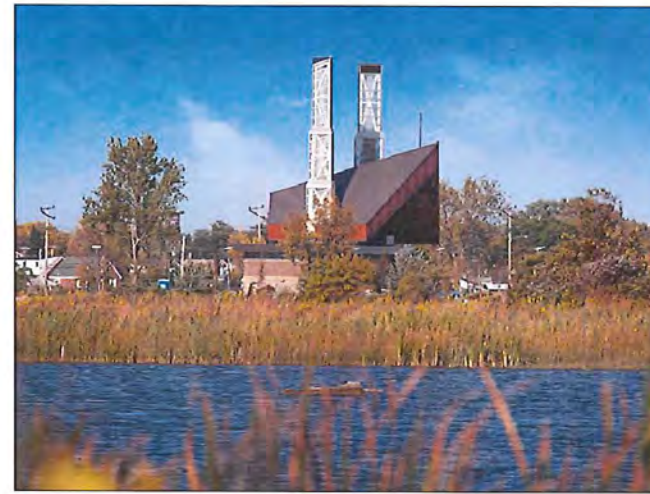
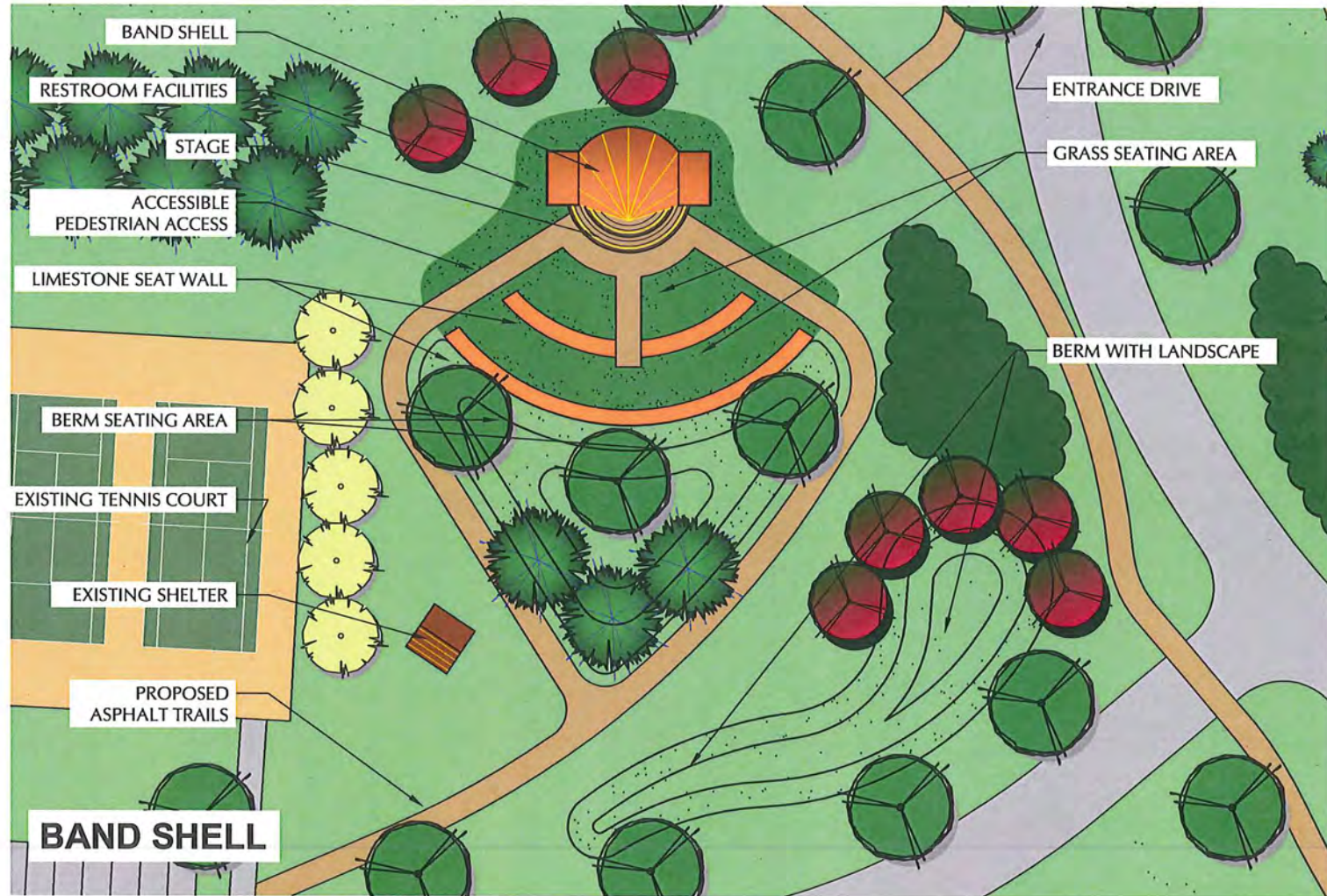


 EXISTING VOLLEYBALL COURTS
 PROPOSED VOLLEYBALL COURTS

 EXISTING SOCCER FIELD
 PROPOSED SOCCER FIELD

 NATURE TRAIL
 EXISTING PAVED TRAIL
 PROPOSED PAVED TRAIL

Bear Cave Park Master Plan
 Stewartville, MN
FIGURE 6
 Master Plan



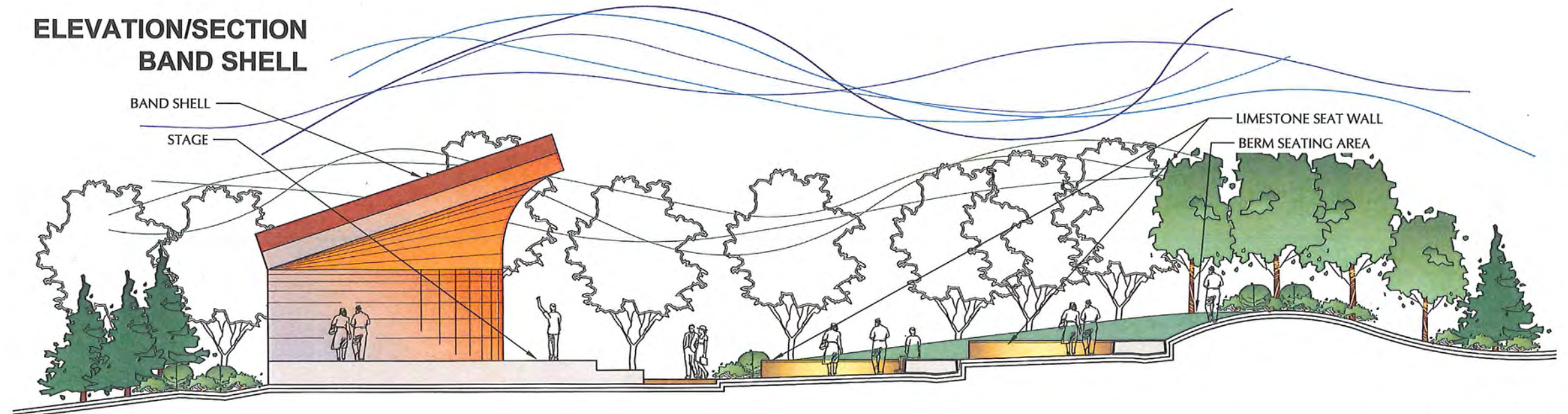
REFERENCE IMAGES

REFERENCE IMAGES



REFERENCE IMAGES

ELEVATION/SECTION BAND SHELL





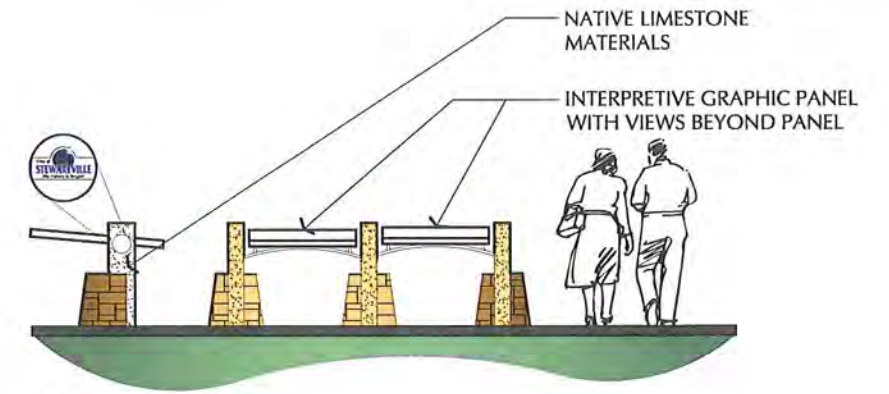
ORIENTATION SIGN

When people visit the City or Parks (parking lots or major activity areas), it may be necessary to inform and direct users to the key features of the community, trail network or park locations. The sign graphics should be formatted in a way that editing the maps and seasonal changing activities can be permitted. Signs can incorporate information and seating opportunities.



IDENTIFICATION SIGN

Identification signs could be placed at locations that are key points of along trail to assist with direction, safety or location of the trail users. These signs are intended to be small, unobtrusive, and provide short messages that direct the park users to key features, park location or to additional information contained on other signs.



INTERPRETIVE SIGN

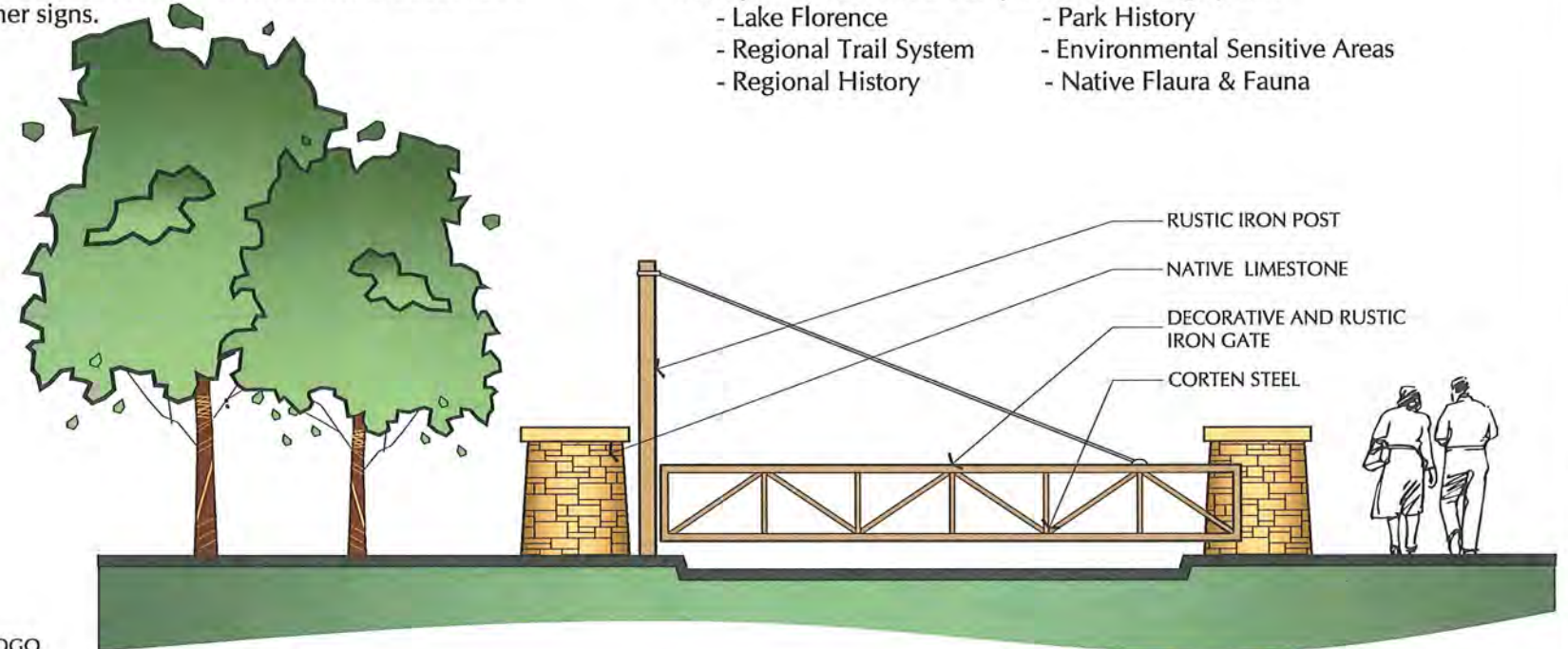
Interpretive signs could be placed at strategic points within the park and along the network of trails to provide an educational opportunity for the users of Bear Cave Park. The key places that tell the history of the City of Stewartville. The following are examples of themes for interpretive text and graphics:

- Lake Florence
- Regional Trail System
- Regional History
- Park History
- Environmental Sensitive Areas
- Native Flora & Fauna



ENTRANCE SIGN

The entrance sign type should highlight the image of Bear Cave Park. These masonry sign concepts would create a timeless presence. An important characteristic is consistency between all signs. The signs should use the same materials, font type, font size and similar scale. The colors on these signs should be natural, such as browns, beiges, gray and black.



ENTRANCE GATE

The entrance gate can become part of the overall image of the park. This would be both a decorative and functional element that would provide the security and aesthetic entrance feature of Bear Cave Park.

Sign System notes

- A key to developing a signage system is the consistency of materials and consistency of message to the user.
- Developing a hierarchy of signage types can provide a strong message to the users of the trails and park system.
- The signs shown above are representation of how a system of signs can work together to create a consistent message in the appropriate place with the appropriate type of sign.

© 12/2014 SEH YAGGY Stewartville Planning 05 Day Park Landscape Graphics/Signage, November 11, 2014 10:15:32 AM



TRAIL REFERENCE IMAGE



BUTTERFLY WEED



PURPLE CONEFLOWER



LIATRIS 'KOBOLD'



GREAT BLUE LOBELIA



NEW ENGLAND ASTER



TRAIL REFERENCE IMAGE



CATMINT



BEE BALM



LITTLE JOE PYE WEED



BLACK EYED SUSAN



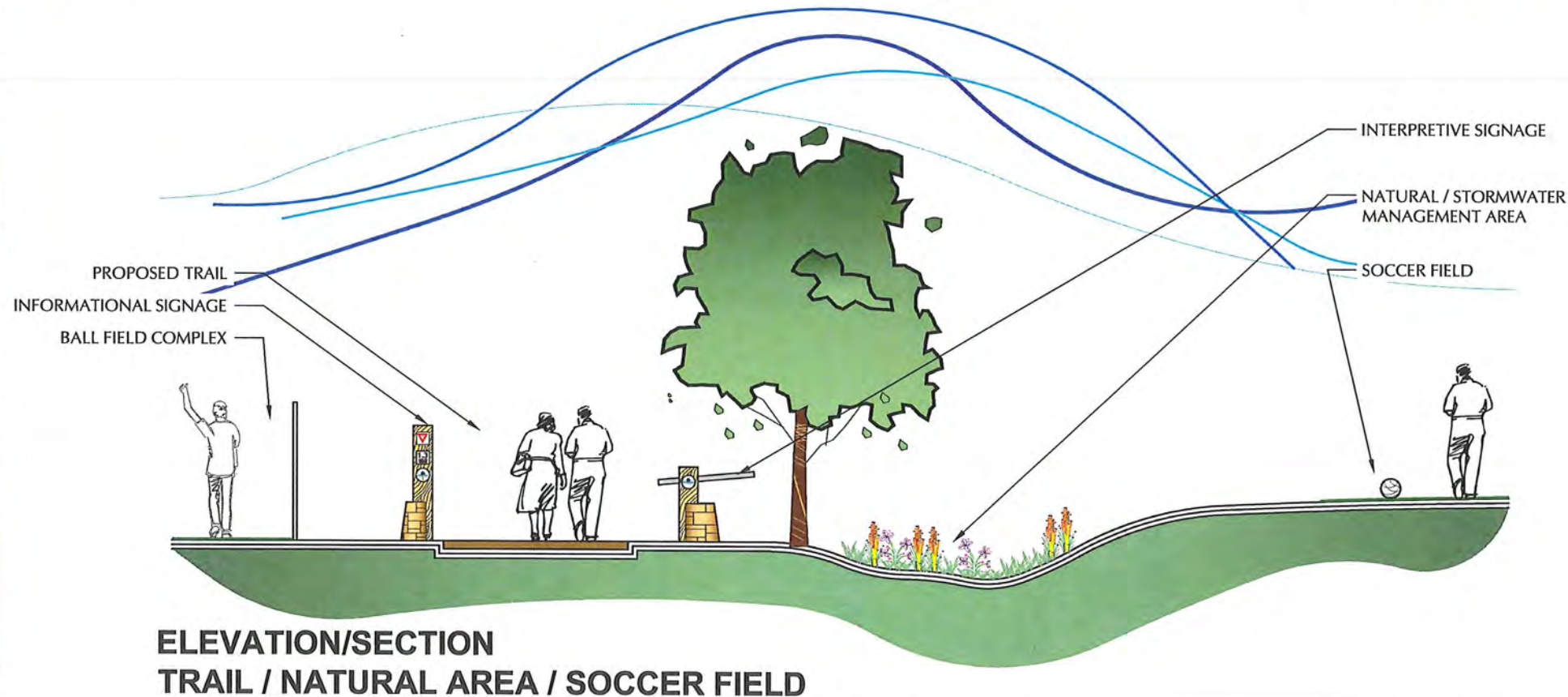
KARL FORESTER FEATHER REED GRASS



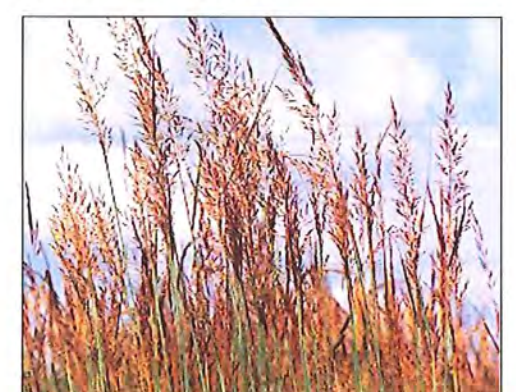
TRAIL REFERENCE IMAGE



TRAIL REFERENCE IMAGE



PRAIRIE DROPSIED



INDIAN GRASS



PROJECT NUMBER : 12998
DATE: October 28, 2014
DRAWN BY: MWE
CHECKED BY: AM

Building a Better World
for All of Us®

Bear Cave Park Master Plan
Stewartville, MN
FIGURE 9
Trail and Plants

PROMINENT PEDESTRIAN CROSSWALKS

Highlighting the crosswalk at 10th Street NW and 11th Avenue NW will provide the focus on the pedestrian access to the proposed school site. Prominent crosswalks are critical for pedestrian safety and comfort. With the high automotive speeds on 10th Street NW, it will be important that this pedestrian crossing be highly visible. When the trails in Bear Cave Park cross one of the internal roadways, crosswalk pavement markings will provide for a safer pedestrian environment.

CROSSWALKS MARKING

Heavy, painted bands are typical for high pedestrian usage. Unique patterns such as colored and/or stamped pavements or brick can provide a change in materials or feeling for the motorist. Crosswalk marking can also provide a creative or whimsical way to address pedestrian safety

PEDESTRIAN FLAGS AND SIGNS

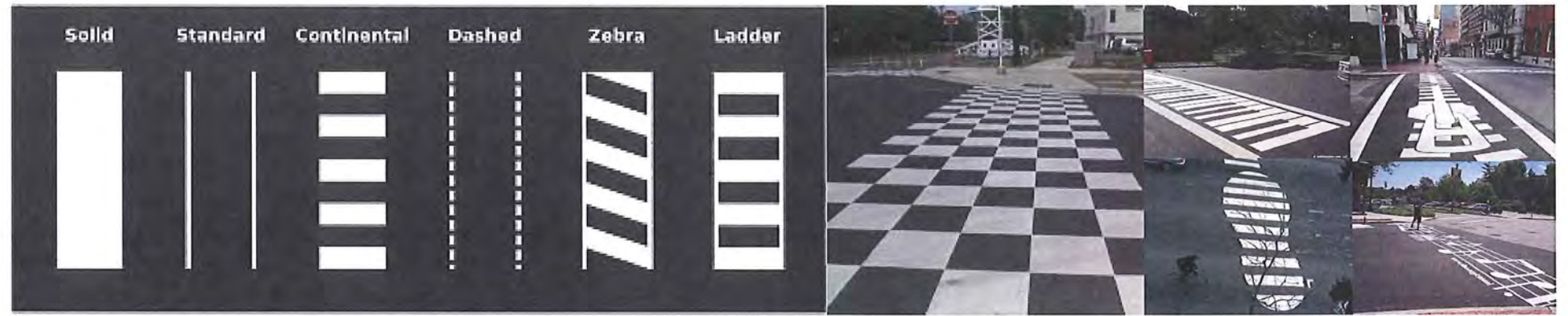
Alternative measures can be added such as pedestrian use flags, crossing guards and additional signs. These options can be added on to the traditional crosswalks pavement markings.

BUMP OUTS AND MEDIAN REFUGE

Curb extensions can be added which slows traffic and shortens the distance the pedestrian has to cross the street. A center median refuge can provide those users that need additional time to cross the street a safe place to be.

CROSSWALK LIGHTING

Pedestrian crossing indicator lights is an additional measure that can be employed to provide pedestrian safety. A pedestrian activated crosswalk indicator may illuminate red stop light stopping traffic while the pedestrians cross the roadway. A pedestrian activated crosswalk indicator could also provide a flashing yellow light or rapid flashing light and have additional lighting imbedded in the street.



Path: G:\12298\GIS\Maps\Stewartville\Map\Stew-Fig 10 Crosswalk.mxd



Bear Cave Park Master Plan Implementation Strategies

- **BAND SHELL**

- Civic building providing a performance space, restrooms, changing rooms
- Centerpiece of Bear Cave Park
- Opportunity for educational use

- **CAMPING SITES**

- Develop 6 - 12 camping sites
- Take advantage of existing wooded space within park

- **NATURAL STORM WATER MANAGEMENT AREA**

- Opportunity to treat storm water in a natural way
- Educational opportunity to inform how storm water treatment can be functional and aesthetic
- Lower maintenance cost

- **CONNECTION TO PROPOSED SCHOOL SITE**

- Prominent connection between the park and school
- Develop crosswalk for a safe pedestrian crossing at 10th Street NW
- Identify opportunities for collaborative use of park and school property
- Develop educational components to the park

- **11th AVENUE NW**

- Consider new access points into park with realignment of 11th Avenue NW

- **PARKING LOTS**

- Revise layouts of northern parking lots based on 11th Avenue realignment
- Design north parking lot to allow for the future Park and Ride location
- Develop north parking lot to accommodate future use as Blue Stem Regional trailhead.
- Reconfigure existing south parking lots to allow for overflow parking on grassed areas and provide opportunity for infiltration of storm water
- Develop a small parking lots at Sunset Prairie and existing northeast entrance drive
- Develop large parking lots to accommodate trees and pedestrian amenities

- **PARK SIGNAGE**

- Entrance signs to be consistent and located at all access points
- Develop a hierarchy of signage providing informative and interpretive signs along trails and at entrance points

- **CONNECTION TO CITY OF STEWARTVILLE PUBLIC UTILITIES**

- Opportunity to connect to Public Utilities as School Site is developed
- Develop plan to provide connections for all restroom and public buildings in Bear Cave Park

- **SAND VOLLEYBALL COURTS**

- Expand Sand Volleyball Courts - two additional courts
- Opportunity to provide expanded leagues and tournament play

- **TRAILS AND PATHWAYS**

- Develop loop trails in Bear Cave Park
- Expand network of nature trails
- Proposed trail network in Bear Cave Park will connect the existing City of Stewartville trail system to proposed school site

- **MAINTENANCE OF EXISTING PARK AMENITIES**

- Playgrounds
- Sand Volleyball Courts
- Tennis Courts
- Soccer Fields
- Ball Field Complex
- Frisbee Golf Course
- Restroom Facilities
- Picnic Shelters
- Concession Building
- Archery Range
- Horseshoes
- Sunset Prairie