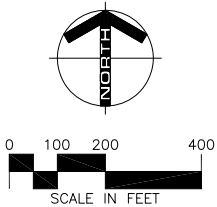
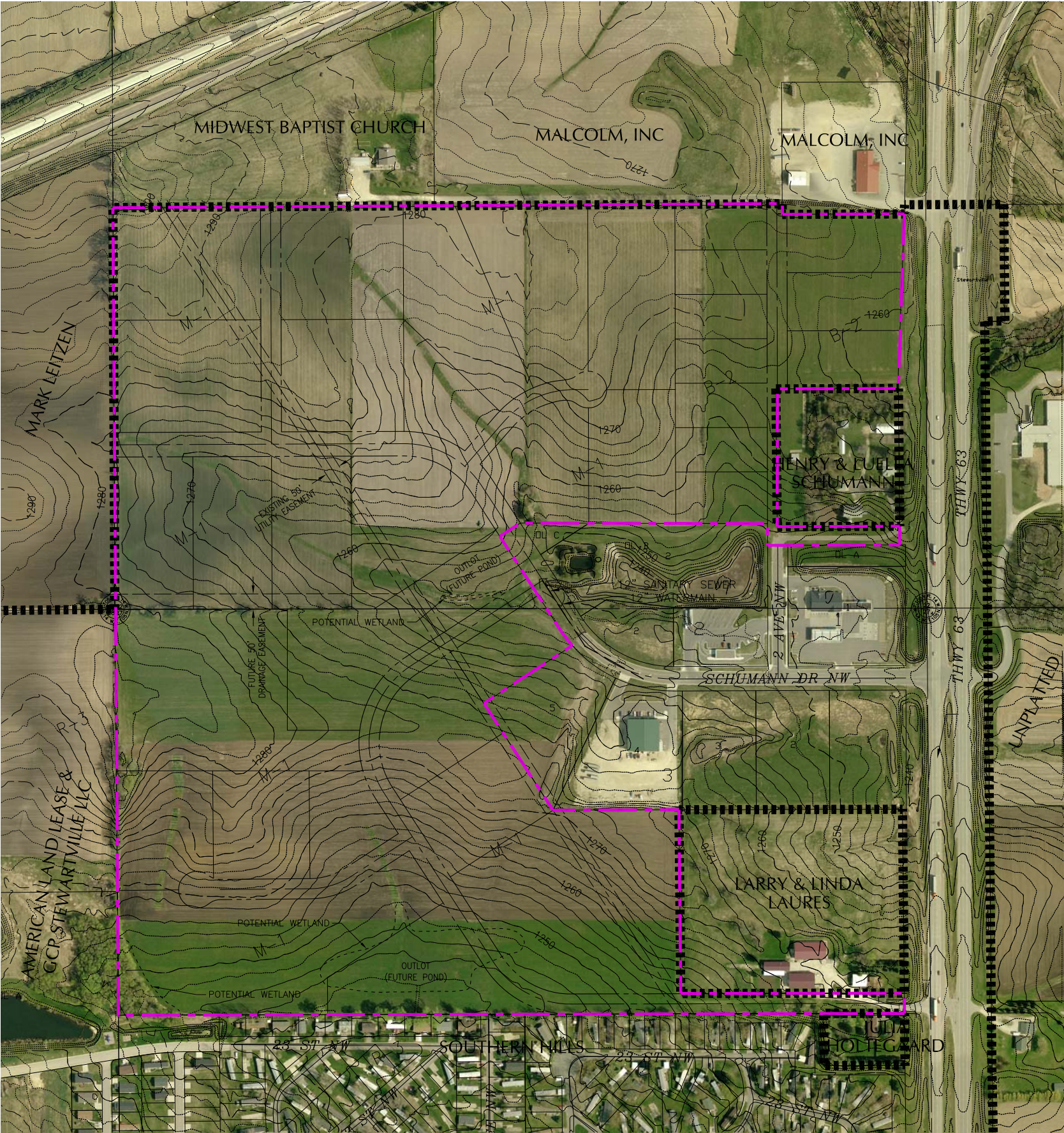


Darrin Farley H:\9598\Coa\Civil\LD\9598.GDP Monday, March 05, 2012 3:25:54 PM



PROPERTY OWNER

HENRY AND LUELLA SCHUMANN
2516 2ND AVENUE NW
STEWARTVILLE, MN 55976

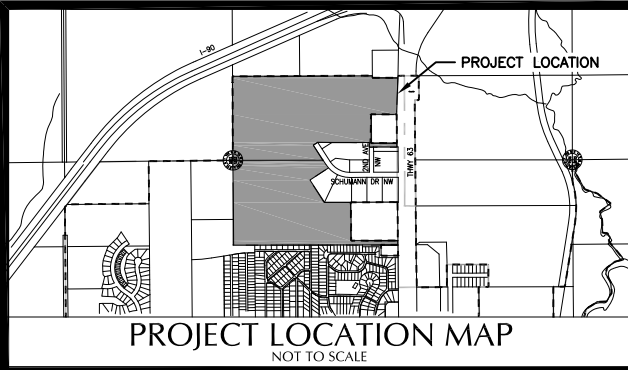
PROPERTY INFORMATION

LOCATED IN THE SOUTH HALF OF THE SOUTHWEST QUARTER OF SECTION 22, T 105 N, R 14 W, OLMSTED COUNTY, MINNESOTA AND IN THE NORTH HALF OF THE NORTHWEST QUARTER OF SECTION 27, T 105 N, R 14 W, OLMSTED COUNTY, MINNESOTA.

GENERAL DEVELOPMENT PLAN AREA CONTAINS 115.59 ACRES (5,034,966.63 S.F.)

LEGEND

- CITY LIMITS
- GENERAL DEVELOPMENT PLAN BOUNDARY



SCHUMANN BUSINESS PARK
STEWARTVILLE, MINNESOTA
GENERAL DEVELOPMENT PLAN

ENGINEERS
LANDSCAPE ARCHITECTS
SURVEYORS • PLANNERS
717 THIRD AVENUE SOUTHEAST
ROCHESTER, MINNESOTA 55904
507-288-6464
FAX 507-288-5058
EMAIL INFO@YAGGY.COM

PROJECT NUMBER	9598
DATE	02-03-12
DRAWN BY	DLF
CHECKED BY	DMS
REVISION HISTORY	
SHEET NUMBER	1
OF	ONE SHEETS