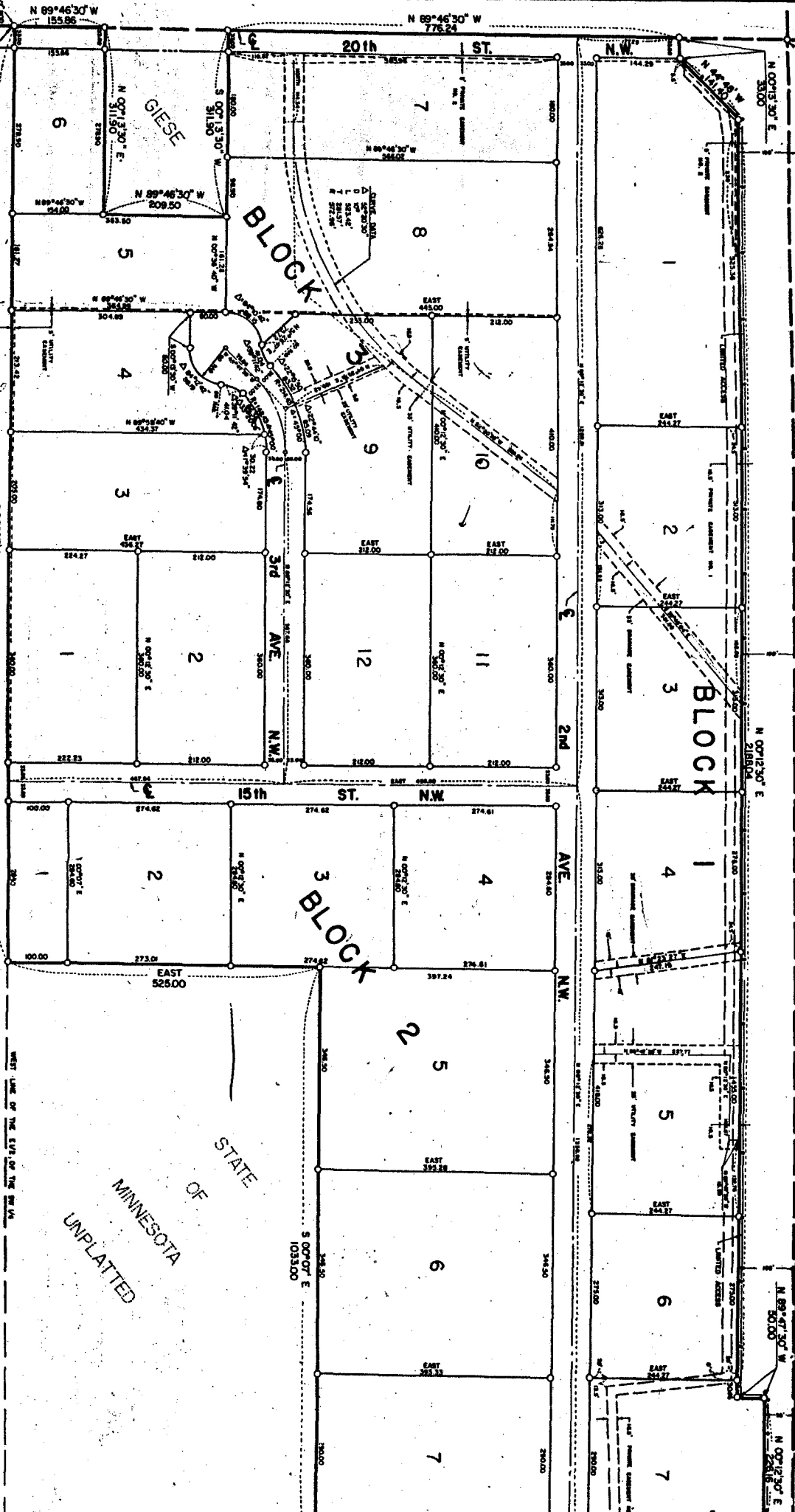


TEBAY'S INDUSTRIAL PARK SUBDIVISION

STEWARTVILLE, MINNESOTA

S.B.L. T.H. NO. 63



POINT OF BEGINNING
UNPLATTED

COPY

STATE OF MINNESOTA
UNPLATTED

PRIVATE EASEMENT NO. 2 DEFINED
A PRIVATE EASEMENT TO INTERSTATE POWER COMPANY AS RECORDED ON
DECEMBER 31, 1970 IN BOOK T-3 OF MISC. ON PAGE 132 IN THE REGISTER
OF DEEDS OFFICE, QUANSETT COUNTY, MINNESOTA.

SCALE 1 INCH = 100 FEET
0 50 100 150 200 250 300

NOTE: MONUMENTS SHOWN THIS ©
INDICATE S&P L.D. ARE
EXCEPT WHEN NOT OTHERWISE
ALL BEARINGS ARE ASSUMED

UTILITY EASEMENT DEFINED:
AN UNRESTRICTED EASEMENT FOR THE CONSTRUCTION AND MAINTENANCE OF ALL NECESSARY
OVERHEAD AND UNDERGROUND WIRE AND PIPE UTILITY LINES, INCLUDING
RIGHTS TO CONDUIT CHANNELS AND TRAILING ON SAID EASEMENT.

PRIVATE EASEMENT NO. 1 DEFINED
A PRIVATE EASEMENT TO NORTHWESTERN BELL TELEPHONE COMPANY AS
RECORDED IN BOOK T-151 IN BOOK 2-2 OF MISC. ON PAGE 423 IN
THE REGISTER OF DEEDS OFFICE, QUANSETT COUNTY, MINNESOTA, SAID
EASEMENT IS SHOWN AS DIVIDED ON THE GROUND BY THE TELEPHONE
COMPANY IN MARCH, 1974.

PREPARED BY:
MAGNE & BETTS
CONSULTING ENGINEERS
ROCHESTER, MINNESOTA

SHEET 1 OF 2 SHEETS TEBAY'S INDUSTRIAL PARK SUBDIVISION